

# Anantrao Kanase Homoeopathic Medical College & Hospital, Alephata, Pune

---

**1) Solar energy:-** a) Solar electricity - Since last 3,4 years we generate electricity by using solar panels .

B) Solar water heater - -for use of collage Hostel

**2) Biogas Plant:-** Developed since 3,4 years in the collage premises & all solid waste are using for this plant.

**3) Use of LED bulbs:-** In the institution premises everywhere , LED tubes & Bulbs are used for the conservation of daily electricity utilization.

## **4) Energy conservation -**

1) Institution have provided CNG vehicle for the teaching staff, who came to the college daily from pune.

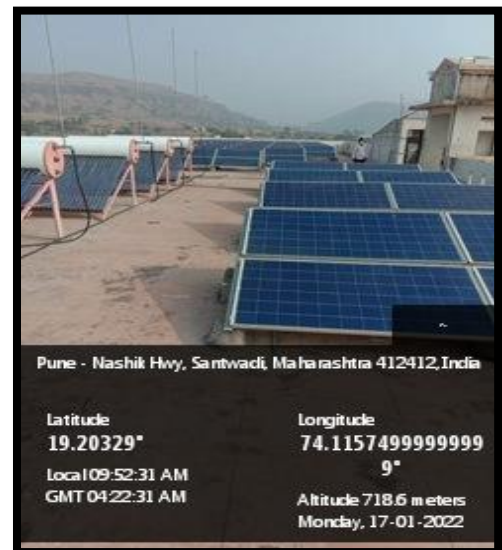
2) The teaching staff coming from nearby are using public vehicles instead of private vehicle



**CNG VEHICAL OF INSTITUTE -**



*Gupkv.*  
**Principal**  
**Anantrao Kanase Homoeopathic**  
**Medical College & Hospital**  
**Alephata**



## SOLAR ELECTRICITY PANELS-



Biogas plant of the institute  
Energy conservation, Solar System of institution



*Gupk.v.*  
Principal  
Anantrao Kanase Homoeopathic  
Medical College & Hospital  
Alephata



LED tube & LED bulb are installed all over institute.



Wheeling to grid facility



*Gupkv.*  
Principal  
Anantrao Kanase Homoeopathic  
Medical College & Hospital  
Alephata