

## 6.1.2 Effective leadership is reflected in various institutional practices such as decentralization and participative management.

### Decentralization and participatory management

The Decentralization in the institute was implemented as a new concept of formation of various committees for effective administration. The aim behind it was enable participation of all the staff members to get actively involved in the functioning of the institute. Different committees are formed with the coordinator as head of the committee, other staff as members of the committee and Principal as chairman of the committee for planning, programming and implementation of the various activities, projects & programmes to be conducted the institute. Committee conducts the meeting and discusses the points, set on the Agenda by the coordinator. The coordinator conducts meeting with Dean for finalizing the decisions. Following committees are established by the Dean and the management

Our institute has three main sections as follows 1. College Administration, 2. Hospital Administration 3. College Academics.

1. College Administration includes Principal, Vice Principal. Account Section Library Store is also governed by Principal and Vice Principal. Account section of our institute includes Office Superintendent, Accountant, Sr. and Jr. Clerk. Library includes Librarian, Assistant Librarian and Peon. Store is having one store officer.
2. Hospital Admiration includes hospital Superintendent and Deputy Superintended . They are looking after various hospital departments, store, hospital accountant, RMO, Technical staff, Nursing Staff, Ward boys, Aya. Hospital of our institute is having nine department as follows. Medicine, Obs/Gyn, Psychiatry, Dermatology, Homoeopathic OPD, Allergy OPD, Preventive OPD, Radiology and Laboratory.
3. College Academics are having 12 department as per rule and regulations mentioned in MSR 2013.

Anatomy, Physiology, Pharmacy, Pathology, FMT, Surgery, OBs/Gyn, Medicine  
Community Medicine, Ogranon, HMM, Repertory

Each department are having MUHS approved Professors, Associate Professors, Assistant Professors as per rules given in MSR 2013.



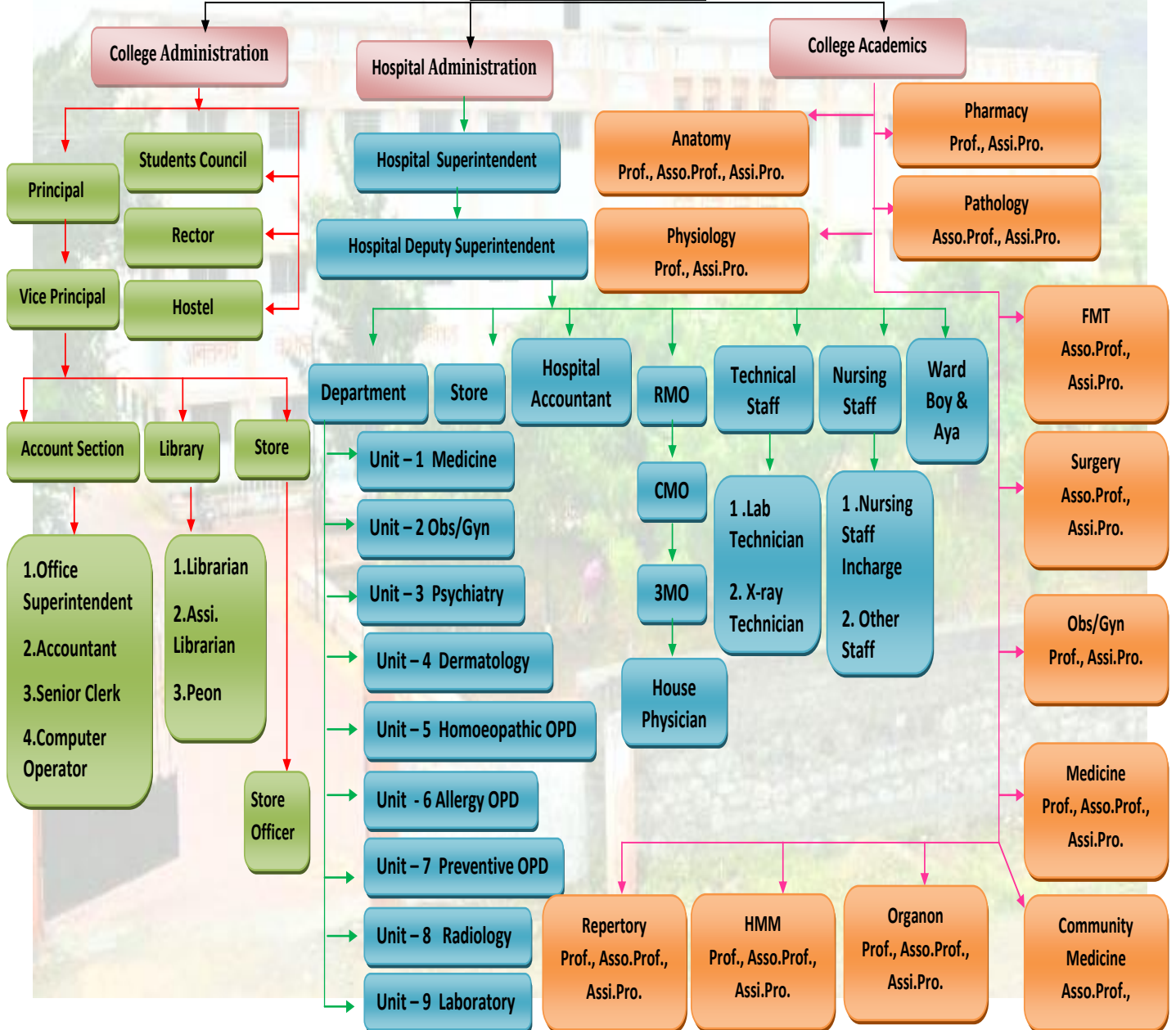
*Syupkv.*  
Principal  
Anantrao Kanase Homoeopathic  
Medical College & Hospital  
Alephata

# Anantrao Kanase Homoeopathic Medical College & Hospital

## ORGANISATIONAL STRUCTURE

Kulswami Medical Foundation

College



*Sujk.v.*  
Principal  
Anantrao Kanase Homoeopathic  
Medical College & Hospital  
Alephata